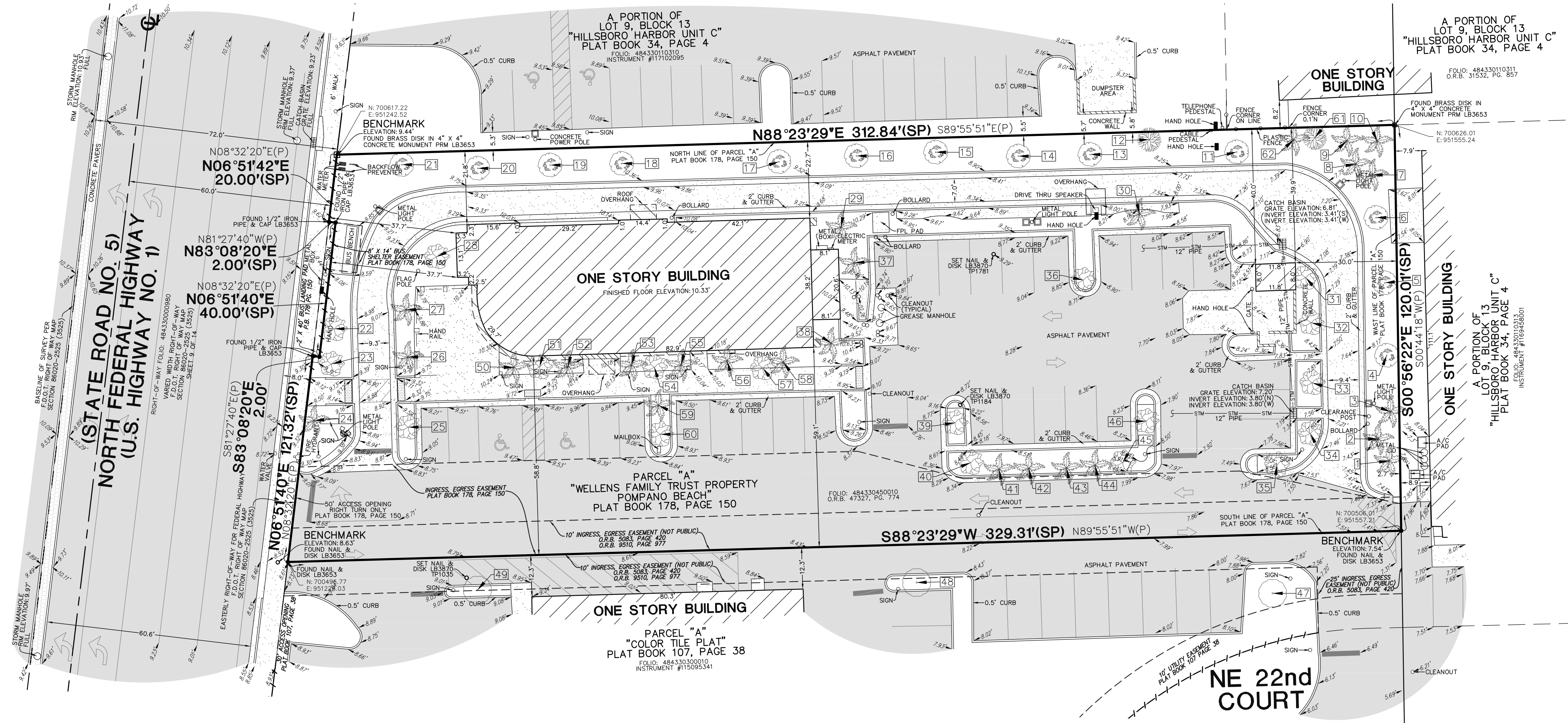




Horticultural Aspects, LLC

Location: 2250 N. Federal Hwy Pompano Beach, FL 33062

Tree Number	Common Name	Genus Species	DBH (Inches)	Height OA (Feet)	Height CT (Feet) (Palms)	Spread (Feet)	Condition Rating (%)
1	Cabbage palm	Sabal palmetto	8	27	21	12	90%
2	Cabbage palm	Sabal palmetto	13	28	22	12	85%
3	Cabbage palm	Sabal palmetto	9	24	19	12	85%
4	Southern live oak	Quercus virginiana	13	25	—	20	80.0%
5	Southern live oak	Quercus virginiana	11	35	—	18	85%
6	Southern live oak	Quercus virginiana	16	28	—	18	85%
7	Cabbage palm	Sabal palmetto	11	27	21	12	80.0%
8	Cabbage palm	Sabal palmetto	18	22	16	12	85.0%
9	Cabbage palm	Sabal palmetto	16	28	22	12	80.0%
10	Cabbage palm	Sabal palmetto	16	29	23	12	90%
11	Southern live oak	Quercus virginiana	11	25	—	16	90%
12	Black olive	Bucida buceras	20	45	—	35	85%
13	Southern live oak	Quercus virginiana	12	28	—	16	80%
14	Southern live oak	Quercus virginiana	14	28	—	18	85.0%
15	Southern live oak	Quercus virginiana	11	32	—	16	85.0%
16	Southern live oak	Quercus virginiana	9	30	—	18	75%
17	Southern live oak	Quercus virginiana	13	30	—	18	80.0%
18	Southern live oak	Quercus virginiana	11	35	—	16	85%
19	Southern live oak	Quercus virginiana	13	30	—	20	85%
20	Southern live oak	Quercus virginiana	7	24	—	15	85.0%
21	Southern live oak	Quercus virginiana	23	45	—	40	80%
22	Green buttonwood	Conocarpus erectus	14	25	—	25	80%
23	Green buttonwood	Conocarpus erectus	16	25	—	25	85%
24	Montgomery palm	Veitchia arecina	8	30	22	24	85.0%
25	Green buttonwood	Conocarpus erectus	16	25	—	25	80%
26	Montgomery palm	Veitchia arecina	18	32	24	25	90%
27	Montgomery palm	Veitchia arecina	16	32	25	25	55%
28	Ligustrum	Ligustrum japonicum	6	7	—	6	65.0%
29	Montgomery palm	Veitchia arecina	16	34	26	24	85%
30	Montgomery palm	Veitchia arecina	16	36	28	24	90%
31	East Palatka Holly	Ilex x attenuata	4	12	—	6	75.0%
32	East Palatka Holly	Ilex x attenuata	5	12	—	6	75.0%
33	East Palatka Holly	Ilex x attenuata	5	12	—	6	75.0%
34	East Palatka Holly	Ilex x attenuata	6	12	—	6	75.0%
35	East Palatka Holly	Ilex x attenuata	8	12	—	6	80.0%
36	East Palatka Holly	Ilex x attenuata	5	12	—	6	80.0%
37	Montgomery palm	Veitchia arecina	16	34	26	24	90%
38	Montgomery palm	Veitchia arecina	20	34	25	24	85%
39	East Palatka Holly	Ilex x attenuata	4	12	—	6	75.0%
40	East Palatka Holly	Ilex x attenuata	5	12	—	6	75.0%
41	Christmas palm	Adonidia merrilli	9	14	8	15	85.0%
42	Christmas palm	Adonidia merrilli	9	14	8	15	80.0%
43	Christmas palm	Adonidia merrilli	5	14	8	8	85.0%
44	Christmas palm	Adonidia merrilli	9	14	8	15	80.0%
45	East Palatka Holly	Ilex x attenuata	4	12	—	6	70.0%
46	East Palatka Holly	Ilex x attenuata	4	12	—	6	75.0%
47	Mahogany	Swietenia mahogani	12	30	—	25	85%
48	Mahogany	Swietenia mahogani	14	30	—	25	80%
49	Mahogany	Swietenia mahogani	13	35	—	30	70%
50	Solitaire palm	Ptychosperma elegans	4	29	23	8	75.0%
51	Jatropha	Jatropha integerrima	5	8	—	6	65%
52	Solitaire palm	Ptychosperma elegans	5	30	24	8	80%
53	Solitaire palm	Ptychosperma elegans	4	28	22	8	80.0%
54	Jatropha	Jatropha integerrima	5	10	—	8	80%
55	Solitaire palm	Ptychosperma elegans	4	28	22	8	75.0%
56	Solitaire palm	Ptychosperma elegans	6	30	24	8	65.0%
57	Jatropha	Jatropha integerrima	6	10	—	10	80%
58	Solitaire palm	Ptychosperma elegans	5	28	22	8	70.0%
59	Montgomery palm	Veitchia arecina	8	24	18	5	70.0%
60	East Palatka Holly	Ilex x attenuata	6	12	—	6	75%
61	Black olive	Bucida buceras	28	45	—	40	75%
62	Montgomery palm	Veitchia arecina	4	12	6	8	80.0%
Prepared by:	Justin Rogers	ISA Certified Arborist					
		FL - 9547A					



LEGAL DESCRIPTION:

PARCEL "A", "WELLENS FAMILY TRUST PROPERTY POMPAÑO BEACH", ACCORDING TO THE PLAT THEREOF, AS RECORDED IN PLAT BOOK 178, PAGE 150, OF THE PUBLIC RECORDS OF BROWARD COUNTY, FLORIDA.

NOTES:

- THIS SURVEY MAP AND REPORT OR THE COPIES THEREOF ARE NOT VALID WITHOUT THE ORIGINAL SIGNATURE AND SEAL OR AN ELECTRONIC SIGNATURE AND ELECTRONIC SEAL OF A FLORIDA LICENSED SURVEYOR AND MAPPER.
- THIS SITE CONTAINS 38,449 SQUARE FEET (0.8827 ACRES) MORE OR LESS.
- ELEVATIONS ARE BASED ON NORTH AMERICAN VERTICAL DATUM OF 1988. CITY OF POMPAÑO BEACH BENCHMARK #1014/2011; ELEVATION: 9.974 FEET AND 009/2011; ELEVATION: 19.806 FEET.
- FLOOD ZONE: X; BASE FLOOD ELEVATION: NONE; PANEL #12011C0188H; COMMUNITY #120055; MAP DATE: 8/18/14.
- THIS SITE LIES IN SECTION 30, TOWNSHIP 48 SOUTH, RANGE 43 EAST, BROWARD COUNTY, FLORIDA.
- BEARINGS ARE BASED ON STATE PLANE COORDINATES AND ARE RELATIVE TO THE NORTH AMERICAN DATUM OF 1983 WITH THE 1990 ADJUSTMENT, FL-E ZONE, WITH THE EAST RIGHT-OF-WAY LINE OF NORTH FEDERAL HIGHWAY (U.S. HIGHWAY NO. 1) (STATE ROAD NO. 5) BEING N06°51'43"E.
- REASONABLE EFFORTS WERE MADE REGARDING THE EXISTENCE AND THE LOCATION OF UNDERGROUND UTILITIES. THIS FIRM, HOWEVER, DOES NOT ACCEPT RESPONSIBILITY FOR THIS INFORMATION, BEFORE EXCAVATION OR CONSTRUCTION CONTACT THE APPROPRIATE UTILITY COMPANIES FOR FIELD VERIFICATION.
- THIS SURVEY IS CERTIFIED EXCLUSIVELY TO: BOWMAN CONSULTING GROUP, LTD; CHICK-FIL-A, INC., A GEORGIA CORPORATION.
- THE HORIZONTAL POSITIONAL ACCURACY OF WELL DEFINED IMPROVEMENTS ON THIS SURVEY IS ±0.2'. THE VERTICAL ACCURACY OF ELEVATIONS OF WELL DEFINED IMPROVEMENTS ON THIS SURVEY IS ±0.1'.
- THIS SITE CONTAINS 29 TOTAL CLEARLY IDENTIFIABLE PARKING SPACES (27 REGULAR & 2 DISABLED).
- THIS SURVEY WAS PREPARED WITHOUT BENEFIT OF A COMMITMENT FOR TITLE INSURANCE. ONLY PLATTED OR KNOWN EASEMENTS ARE DEPICTED HEREON.
- ALL RECORDED DOCUMENTS ARE PER BROWARD COUNTY RECORDS.
- THE TREE SYMBOLS DEPICTED HEREON ARE NOT SCALED TO TREE CANOPY.
- ALL MATTERS SHOWN ON RECORDED PLAT PROVIDED TO THE SURVEYOR DEPICTED HEREON AND SHOWN ON THE SURVEY.
- THERE WAS NO EVIDENCE OF RECENT EARTH MOVING WORK, BUILDING CONSTRUCTION, OR BUILDING ADDITIONS OBSERVED IN THE PROCESS OF CONDUCTING THE FIELDWORK.
- THERE ARE NO KNOWN PROPOSED CHANGES IN STREET RIGHT-OF-WAY LINES. THERE WAS NO EVIDENCE OF RECENT STREET OR SIDEWALK CONSTRUCTION OR REPAIRS OBSERVED IN THE PROCESS OF CONDUCTING THE FIELDWORK.

LEGEND

CONCRETE	CONCRETE
ASPHALT PAVEMENT	ASPHALT PAVEMENT
ELEVATION	ELEVATION
UNDERGROUND STORM SEWER LINE	UNDERGROUND STORM SEWER LINE
UNDERGROUND SANITARY SEWER LINE	UNDERGROUND SANITARY SEWER LINE
NON-VEHICULAR ACCESS LINE	NON-VEHICULAR ACCESS LINE
CENTERLINE	CENTERLINE
F.D.O.T.	FLORIDA DEPARTMENT OF TRANSPORTATION
FPL	FLORIDA POWER & LIGHT COMPANY
LB	LICENSED BUSINESS
O.R.B.	OFFICIAL RECORDS BOOK
TP	TRAVERSE POINT (FOR FIELD INFORMATION ONLY)
A/C	AIR CONDITIONING
(P)	PLAT
(SP)	STATE PLANE
[XXXXXX]	STATE PLANE COORDINATES
[Palm Tree Symbol]	PALM TREE
[Oak Tree Symbol]	OAK TREE
[Mahogany Tree Symbol]	MAHOGANY TREE
[Black Olive Tree Symbol]	BLACK OLIVE TREE
[Undetermined Tree Symbol]	UNDETERMINED TREE
[Tree Identifier Symbol]	TREE IDENTIFIER

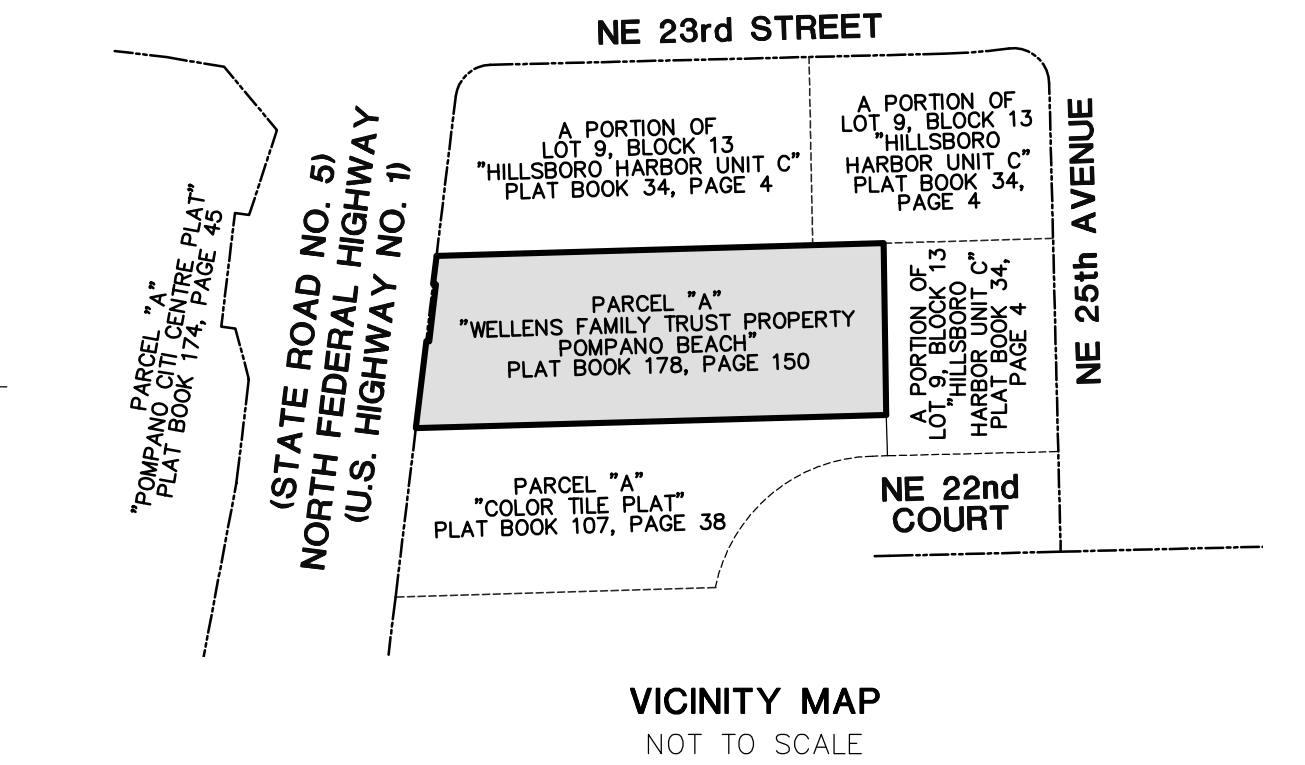
CERTIFICATION:

I HEREBY CERTIFY: THAT THIS SKETCH OF SURVEY MEETS THE STANDARDS OF PRACTICE SET FORTH BY THE FLORIDA DEPARTMENT OF AGRICULTURE AND CONSUMER SERVICES ("DOACS") CHAPTER 5J-17, FLORIDA ADMINISTRATIVE CODE, PURSUANT TO SECTION 472.027, FLORIDA STATUTES.

Digitally signed by John F Police

Date: 2021.07.06 14:38:49

JOHN F. POLICE, PROFESSIONAL SURVEYOR AND MAPPER LS6136
DONNA C. WEST, PROFESSIONAL SURVEYOR AND MAPPER LS6274
STATE OF FLORIDA



COPYRIGHT 2021 BY POLICE LAND SURVEYORS, INC. ALL RIGHTS RESERVED. NO PART OF THIS SURVEY MAY BE REPRODUCED, IN ANY FORM OR BY ANY MEANS, WITHOUT PERMISSION IN WRITING FROM AN OFFICER OF POLICE LAND SURVEYORS, INC.

NO.	ADDED TREE TABLE & LABELS 6/17/21	B.B.
1	ADDED TREE TABLE & LABELS 6/17/21	B.B.
2	ADDED TREE TABLE & LABELS 6/17/21	B.B.
3	ADDED TREE TABLE & LABELS 6/17/21	B.B.
4	ADDED TREE TABLE & LABELS 6/17/21	B.B.
5	ADDED TREE TABLE & LABELS 6/17/21	B.B.
6	ADDED TREE TABLE & LABELS 6/17/21	B.B.
7	ADDED TREE TABLE & LABELS 6/17/21	B.B.
8	ADDED TREE TABLE & LABELS 6/17/21	B.B.
9	ADDED TREE TABLE & LABELS 6/17/21	B.B.
10	ADDED TREE TABLE & LABELS 6/17/21	B.B.
11	ADDED TREE TABLE & LABELS 6/17/21	B.B.
12	ADDED TREE TABLE & LABELS 6/17/21	B.B.
13	ADDED TREE TABLE & LABELS 6/17/21	B.B.
14	ADDED TREE TABLE & LABELS 6/17/21	B.B.
15	ADDED TREE TABLE & LABELS 6/17/21	B.B.
16	ADDED TREE TABLE & LABELS 6/17/21	B.B.
17	ADDED TREE TABLE & LABELS 6/17/21	B.B.
18	ADDED TREE TABLE & LABELS 6/17/21	B.B.
19	ADDED TREE TABLE & LABELS 6/17/21	B.B.
20	ADDED TREE TABLE & LABELS 6/17/21	B.B.
21	ADDED TREE TABLE & LABELS 6/17/21	B.B.
22	ADDED TREE TABLE & LABELS 6/17/21	B.B.
23	ADDED TREE TABLE & LABELS 6/17/21	B.B.
24	ADDED TREE TABLE & LABELS 6/17/21	B.B.
25	ADDED TREE TABLE & LABELS 6/17/21	B.B.
26	ADDED TREE TABLE & LABELS 6/17/21	B.B.
27	ADDED TREE TABLE & LABELS 6/17/21	B.B.
28	ADDED TREE TABLE & LABELS 6/17/21	B.B.
29	ADDED TREE TABLE & LABELS 6/17/21	B.B.
30	ADDED TREE TABLE & LABELS 6/17/21	B.B.
31	ADDED TREE TABLE & LABELS 6/17/21	B.B.
32	ADDED TREE TABLE & LABELS 6/17/21	B.B.
33	ADDED TREE TABLE & LABELS 6/17/21	B.B.
34	ADDED TREE TABLE & LABELS 6/17/21	B.B.
35	ADDED TREE TABLE & LABELS 6/17/21	B.B.
36	ADDED TREE TABLE & LABELS 6/17/21	B.B.
37	ADDED TREE TABLE & LABELS 6/17/21	B.B.
38	ADDED TREE TABLE & LABELS 6/17/21	B.B.
39	ADDED TREE TABLE & LABELS 6/17/21	B.B.
40	ADDED TREE TABLE & LABELS 6/17/21	B.B.
41	ADDED TREE TABLE & LABELS 6/17/21	B.B.
42	ADDED TREE TABLE & LABELS 6/17/21	B.B.
43	ADDED TREE TABLE & LABELS 6/17/21	B.B.
44	ADDED TREE TABLE & LABELS 6/17/21	B.B.
45	ADDED TREE TABLE & LABELS 6/17/21	B.B.
46	ADDED TREE TABLE & LABELS 6/17/21	B.B.
47	ADDED TREE TABLE & LABELS 6/17/21	B.B.
48	ADDED TREE TABLE & LABELS 6/17/21	B.B.
49	ADDED TREE TABLE & LABELS 6/17/21	B.B.
50	ADDED TREE TABLE & LABELS 6/17/21	B.B.
51	ADDED TREE TABLE & LABELS 6/17/21	B.B.
52	ADDED TREE TABLE & LABELS 6/17/21	B.B.
53	ADDED TREE TABLE & LABELS 6/17/21	B.B.
54	ADDED TREE TABLE & LABELS 6/17/21	B.B.
55	ADDED TREE TABLE & LABELS 6/17/21	B.B.
56	ADDED TREE TABLE & LABELS 6/17/21	B.B.
57	ADDED TREE TABLE & LABELS 6/17/21	B.B.
58	ADDED TREE TABLE & LABELS 6/17/21	B.B.
59	ADDED TREE TABLE & LABELS 6/17/21	B.B.
60	ADDED TREE TABLE & LABELS 6/17/21	B.B.
61	ADDED TREE TABLE & LABELS 6/17/21	B.B.
62	ADDED TREE TABLE & LABELS 6/17/21	B.B.

BOUNDARY AND TOPOGRAPHIC SURVEY

	POLICE LAND SURVEYORS, INC. 5381 NOB HILL ROAD SUNRISE, FLORIDA 33351 TELEPHONE: (954) 572-1777 FAX: (954) 572-1778 E-MAIL: police@police-land-surveyors.com WEBSITE: www.police-land-surveyors.com CERTIFICATE OF AUTHORIZATION LB#38
DRAWN BY: L.H.	SCALE: 1" = 20'
CHECKED BY: J.F.P.	SURVEY DATE: 5/18/21
FILE: BOWMAN CONSULTING GROUP, LTD	ORD NO. 6180

PZ21-16500001
8/4/21